

# SPECIFICATION:

For Dip switch configuration, please visit us online at  
<http://lcdparts.net/howto/MS456UB.aspx>

|              |                                     |
|--------------|-------------------------------------|
| MS456UB Ver6 | Dimension: 125MM(L)X30MM(W)X10MM(H) |
|--------------|-------------------------------------|

MS456UB-V6 is design for 12.1 to 24 inch LCD screen. MS456UB-V6 can drive LED strips up to 55V DC (20W).

Input Pin Assignment:

Default Pin Assignment: (Shorted J2, Shorted J3)

| PIN NO | SYMBOL | DESCRIPTION                         |
|--------|--------|-------------------------------------|
| 1,2    | VIN    | POWER SUPPLY: 10.5-19V DC*          |
| 6      | ENA    | ENABLED & DISABLED CONTROL: 3.0V ON |
| 4      | ADJ    | BRIGHTNESS CONTROL: 0-3.5V, 0V=MAX. |
| 3,5    | GND    | POWER SUPPLY GROUND, P3=NC          |

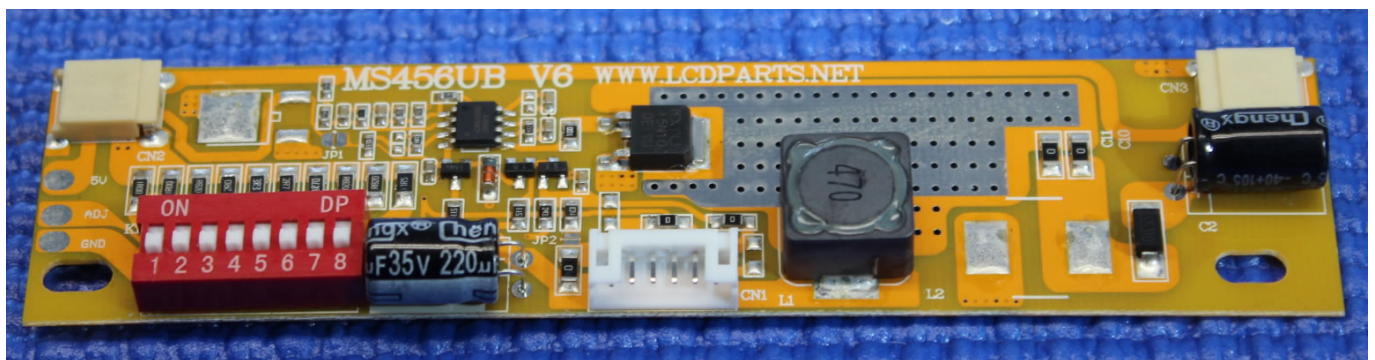
Optional Pin Assignment: (Shorted J1 and Shorted J4)

| PIN NO | SYMBOL | DESCRIPTION                         |
|--------|--------|-------------------------------------|
| 1,2    | VIN    | POWER SUPPLY: 10.5-19V DC *         |
| 3      | ENA    | ENABLED & DISABLED CONTROL: 3.0V ON |
| 4      | ADJ    | BRIGHTNESS CONTROL: 0-3.5V, 0V=MAX. |
| 5,6    | GND    | POWER SUPPLY GROUND, P6=NC          |

Output Pin Assignment:

CN2 and CN3

| PIN | SYMBOL | FUNCTION            |
|-----|--------|---------------------|
| 1   | Red    | POWER SUPPLY OUTPUT |
| 2   | LV     | POWER SUPPLY GROUND |



**WWW.LCDPARTS.NET**

For Dip switch configuration, please visit us online at  
<http://lcdparts.net/howto/MS456UB.aspx>

# SPECIFICATION:

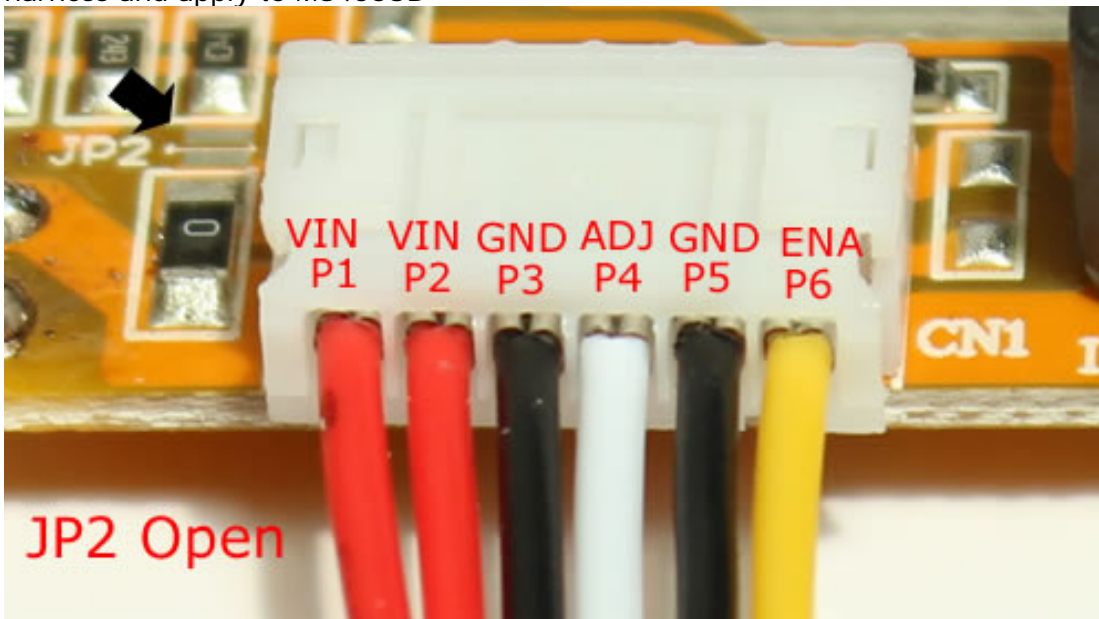
For Dip switch configuration, please visit us online at  
<http://lcdparts.net/howto/MS456UB.aspx>

MS456UB Ver6

Dimension: 125MM(L)X30MM(W)X10MM(H)

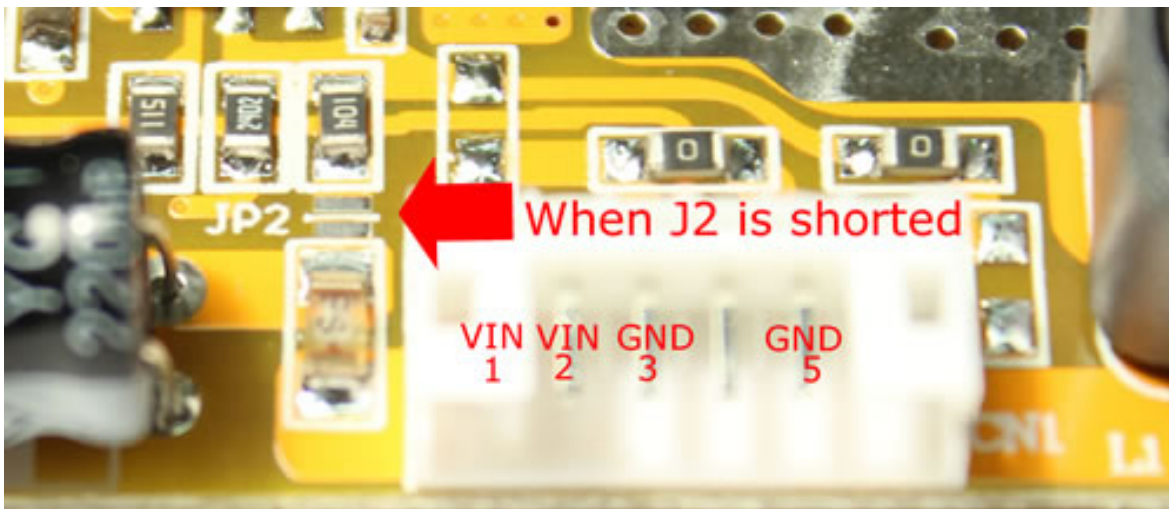
## How to connect MS456UB to the existing inverter wire harness

There is a 6 pin connectors on MS456UB (CN1). Pin outs are available on solder side. Pin1/Pin2=VIN (+12V ~ 24V DC). P3/P5=GND (Power Ground). P4=ADJ (Brightness adjustment, N/C no connection), P6=ENA (On/Off). You will find all these DC voltage from your existing inverter wire harness and apply to MS456UB



## How to Disable Enable

Just simply add solder on JP2 near Pin 1 of CN1. That is it!



[WWW.LCDPARTS.NET](http://WWW.LCDPARTS.NET)

For Dip switch configuration, please visit us online at  
<http://lcdparts.net/howto/MS456UB.aspx>

# SPECIFICATION:

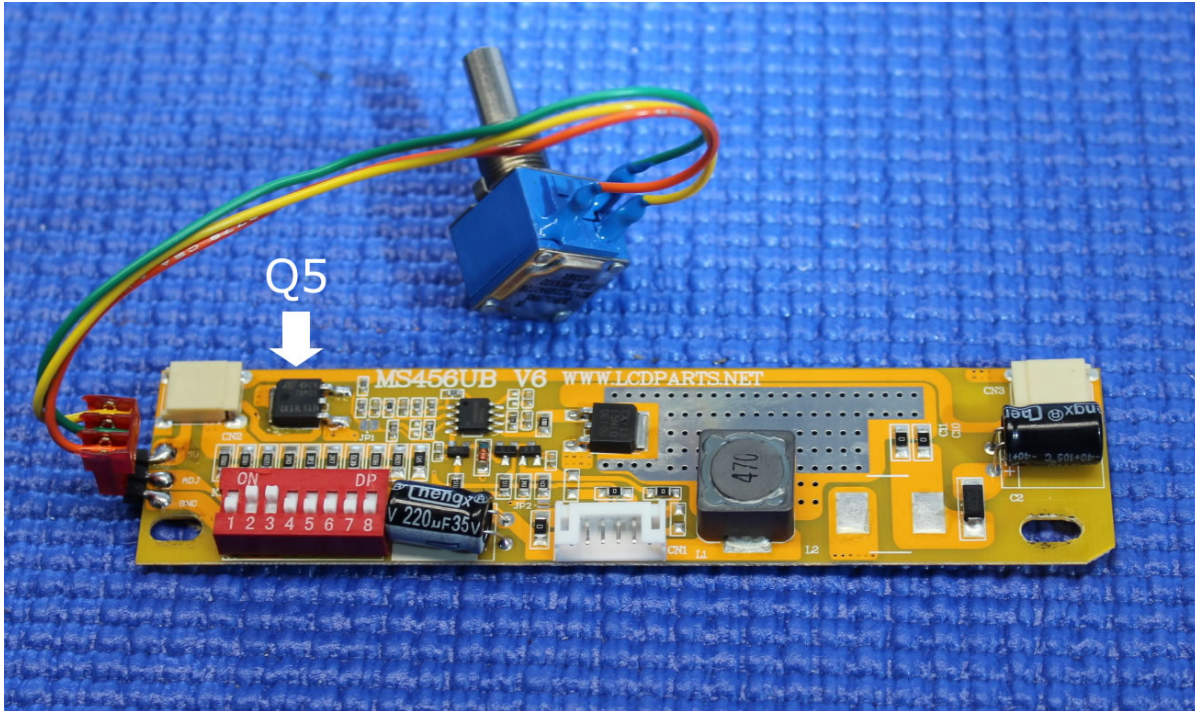
For Dip switch configuration, please visit us online at  
<http://lcdparts.net/howto/MS456UB.aspx>

MS456UB Ver6

Dimension: 125MM(L)X30MM(W)X10MM(H)

## External Bright Control:

By adding Q5 (a 5V DC regulator) and a 10k variable resistor (Pot). Brightness level can be adjusted externally as shown on the photo below:



Note: When using an external brightness control, no connection on pin 4 (ADJ)

**WWW.LCDPARTS.NET**

For Dip switch configuration, please visit us online at  
<http://lcdparts.net/howto/MS456UB.aspx>