

## PRODUCT SPECIFICATION

# MS609LC

HDMI2EDP-4Kx2K-V4.0

Ultra-High-Definition LCD screen controller board

## Content

1. General Description	P2
2. Product Appearance	P3
3. Pin Assignments	P4
4. Mechanical Dimension	P5

## General Description

MS609LC (HDMI2EDP-4Kx2K-V4.0) is an EDP interfaces for ultra-high-definition LCD screen controller board. Small and compact size makes it easy to mount. HDMI input point to point display with supper clear images. MS609LC is the best and most reliable eDP controller that you can find in Today's market.

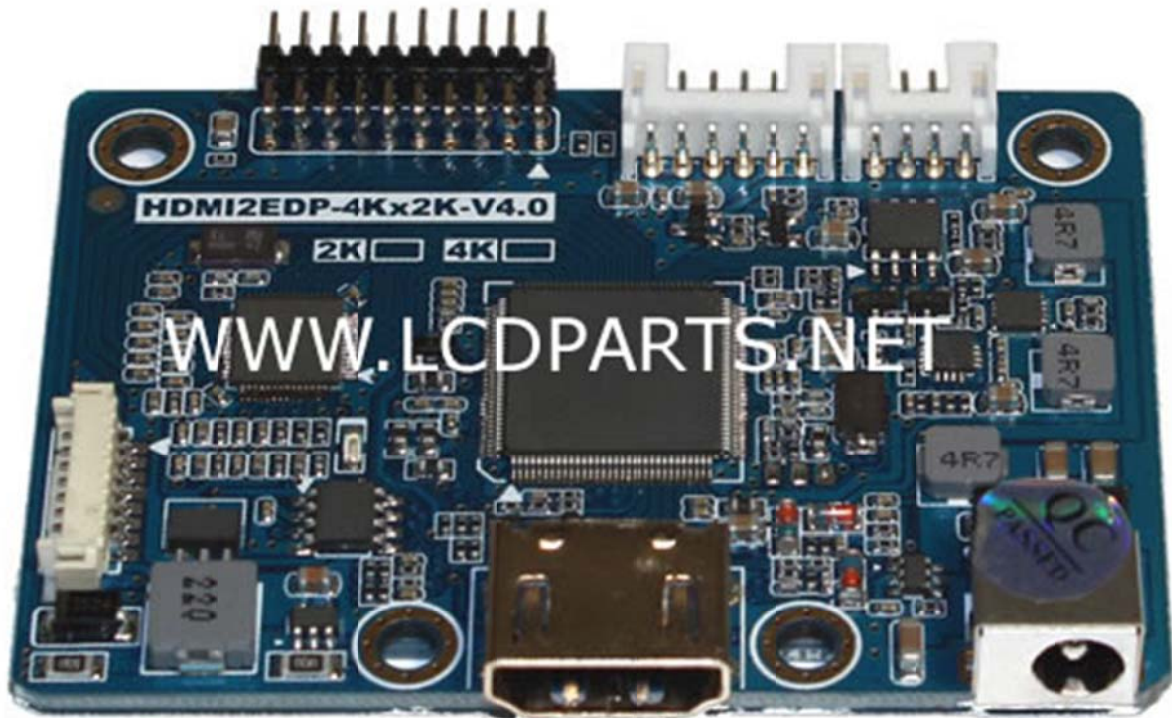
2K version: Support up to 2048 X 1536

## Features:

- Support HDMI up to 1.4 versions
- Support 2 lane and 4 lane eDP interface
- Build-in LED driver with 120ma and max 30V DC output
- Multi language OSD Menu
- Build-in Audio Amp
- 9V to 12V DC supply

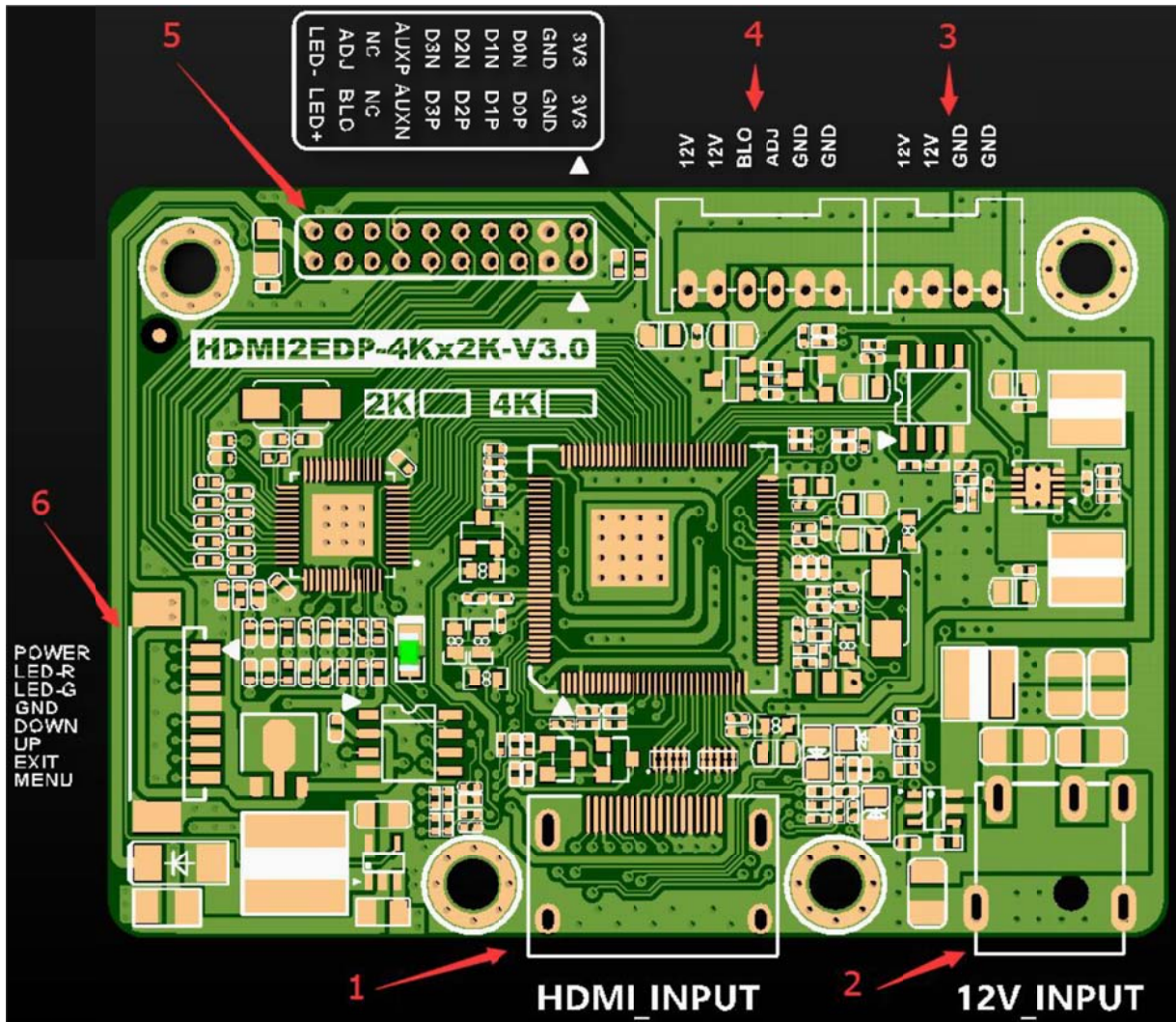
MoniServ, Inc. | [www.lcdparts.net](http://www.lcdparts.net)  
1600 Noriega Street | San Francisco | CA 94122 | 1-888-785-7288

Product Appearance:



MoniServ, Inc. | [www.lcdparts.net](http://www.lcdparts.net)  
1600 Noriega Street | San Francisco | CA 94122 | 1-888-785-7288

### Pin Assignments:



- 1 HDMI Input connector
- 2 12V DC Input
- 3 12V Dc Output
- 4 Inverter Output
- 5 eDP screen wire connector
- 6 KeyPCB connector

### Mechanical Dimension:

Dimension: 72mm (L) X 51mm(W) X 9mm (H)

4 screen hole: 3mm diameter

